

### INTENDED USE

Certified by the OIE in May 2022 as fit for the qualitative detection of white spot syndrome virus (WSSV) antigen for the following purposes:

1. Confirmatory diagnosis of clinical cases (includes confirmation of suspect cases and a positive screening test)
2. Estimate prevalence of infection to facilitate risk analysis (in production system shrimp farms to aid in management practices). The test kit should not be used to estimate prevalence in broodstock or post larvae shrimp for risk analysis prior to translocation to other farms or across borders.
3. For use in conjunction with other tests or diagnostic procedures, as an aid in diagnosis or other clinical or epidemiological assessments.

### INTRODUCTION

WSSV is a highly infectious agent that causes mass mortality in farmed penaeid shrimp worldwide. Inncreate Bioscience WSSV RP Rapid Test Kit is a risk management tool based on immunoassay for shrimp aquaculture. The beneficial features of this strip are simple, convenient and quick, results can be obtained without the requirement of sophisticated tools or special skills.

The test can be applied to shrimps that present behavioral changes (lethargy, decreased or absent feed consumption and abnormal swimming behaviors - slow swimming, swimming on side, swimming near the water surface, and gathering around edges of rearing units), either on a regular basis or when environmental stress, such as rapid changes in salinity, or suspected WSSV outbreak occurred.

### PREPARATION

1. When stored in a refrigerator, all kit components must be brought to room temperature (15-30 °C) for a minimum of 30 minutes prior to performing the test.
2. Remove the foil packaging prior to use. Place on a flat, horizontal and clean surface.
3. Perform the test immediately after remove the test cassette from the foil pouch.
4. Add 0.25ml extraction buffer (5-6 drops) into the sample tube, before adding the tissue sample into the buffer.

### TEST PRINCIPLE

The test Device contains a membrane strip, which is pre-coated with anti-WSSV antibody on the test line (T) and control antibody on the control (C) line. Gold conjugate (binds to the WSSV) moves upward on the membrane chromatographically and reacts with pre-coated anti-WSSV antibody. For a positive result, gold conjugate and anti-WSSV antibody will form a test line in the result window.

### REAGENTS AND MATERIALS SUPPLIED

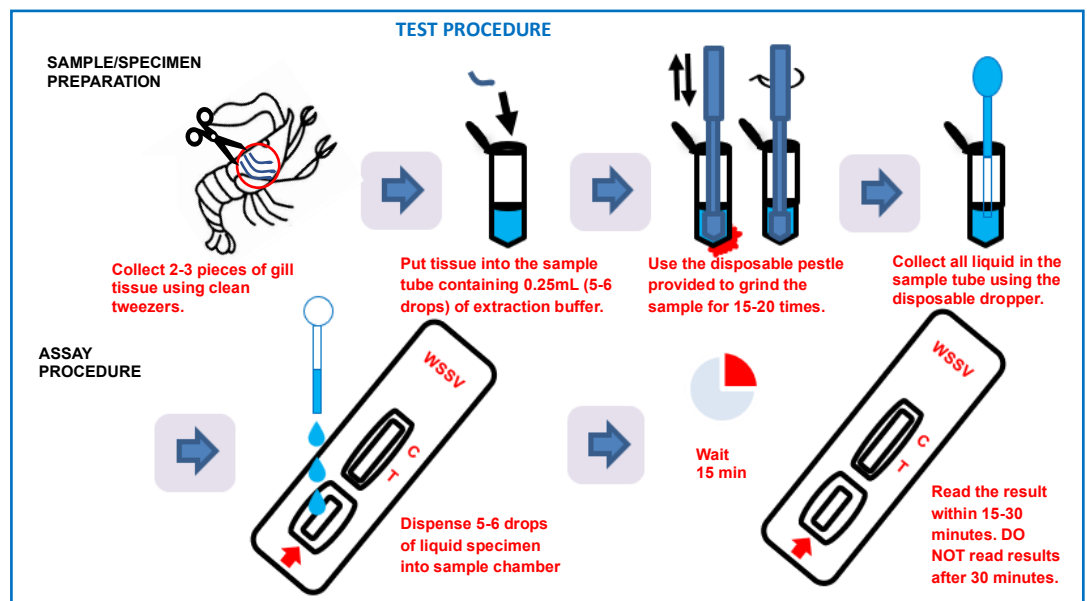
1. WSSV Rapid Test Kit (20 sets)
  - 1.1 WSSV Rapid Test cassette (1 piece, single-use only)
  - 1.2 Disposable pestle (1 piece, single-use only)
  - 1.3 Disposable dropper (1 piece, single-use only)
2. Extraction Buffer (one 5 mL dropper bottle)
3. Sample tube (20 pieces, single-use only)
4. One copy of the instruction manual

### MATERIALS REQUIRED BUT NOT SUPPLIED

1. Clock or timer
2. Tweezers
3. Positive control (could be purchased from the manufacturer)

### STORAGE AND STABILITY

1. The kit can be stored at 4-30 °C in the sealed pouch to the date of expiration. **DO NOT FREEZE**. Kept away from direct sunlight, and heat. The expiration date is described on the product package.
2. The Extraction Buffer bottle may be opened and resealed for each assay. The Buffer cap should be firmly sealed between each use.



### INTERPRETATION OF RESULT

#### Positive result:

The pink/purple colored line appears at both the test line (T) and control line (C) indicating that the shrimp was infected with WSSV.

**Caution:** Reading the test results earlier than 15 minutes or later than 30 minutes may give incorrect results..

#### Negative result:

The pink/purple colored line appears only on the control line (C) indicating that no infection of WSSV or light infection beyond the sensitivity of the kit. The sample should be confirmed by higher sensitive methods.

#### Invalid:

If there is no line at the control line(C), please retest with new kit

### Limitations of the Test

1. Although the Inncreate Bioscience WSSV RP Test Kit is very accurate in detecting WSSV. A negative test result may occur if the specimen was collected, extracted, or transported improperly. A negative test result does not eliminate the possibility of WSSV infection and should be confirmed by higher sensitive methods (e.g. qPCR). A definitive clinical diagnosis should not be based on the result of a single test.
2. Inncreate Bioscience and its distributors cannot be held responsible for the consequences of misuse or misinterpretation of the results given by the test.

