



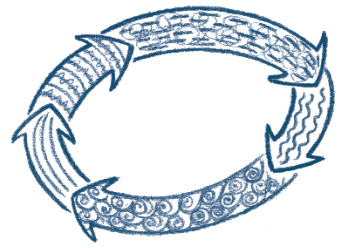
Food and Agriculture Organization
of the United Nations

Paris – April 2023

Emergency Management Centre

Increasing preparedness to threats through GEMP principles





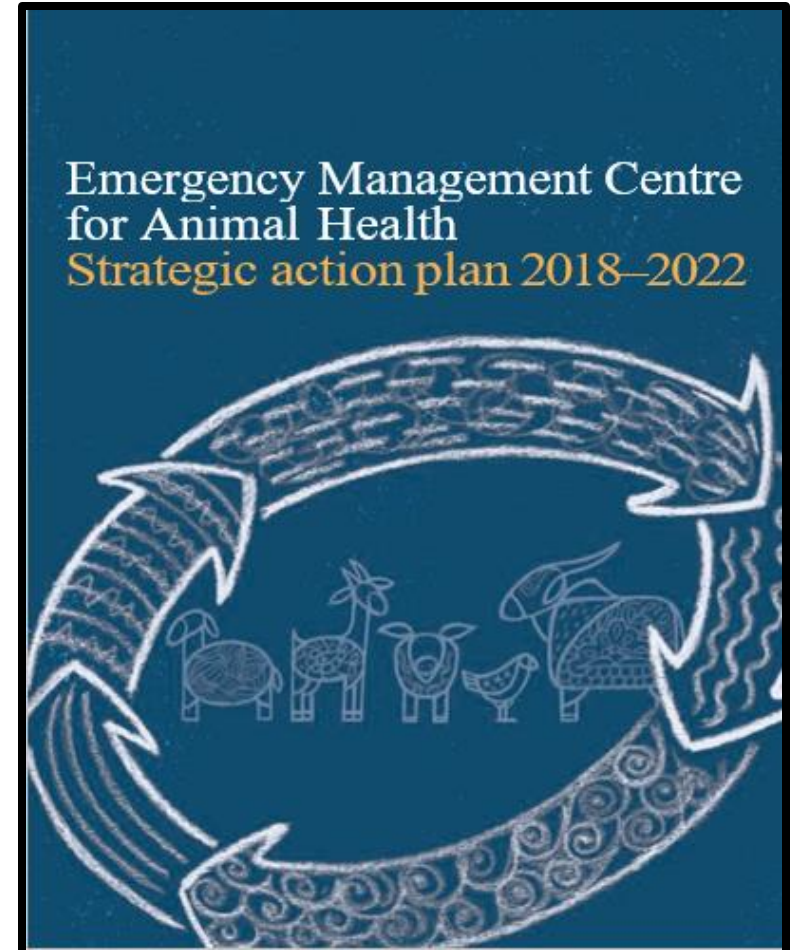
FAO Emergency Management Centre (EMC): service provider in emergency management

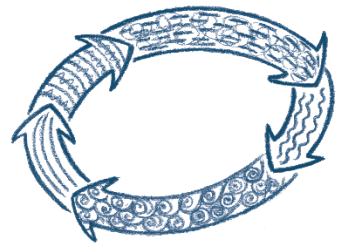
Vision:

A world prepared to manage high impact animal health emergencies

Purpose:

To enhance country, regional and international capacity to be better prepared to respond to animal health emergencies.





What is the EMC?



TECHNICAL

OPERATIONAL

NSA
*Animal Health and
Production
Division*

NSP
*Plant Production
and Protection
Division*

OER
*Emergency and
Resilience
Division*

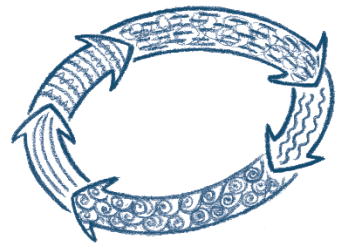
NSAH/CJWZ
*Animal Health Service
FAO/WHO Centre*

NSPM
*Locust and Transboundary
International*

GPST
*Global Programme Support
Team*

Joint OH Platform

EMC
Emergency Management Centre



Emergency management services proposed by EMC

PILLARS

PREPAREDNESS

Support countries to enhance their readiness for the management of animal health emergencies



ACTIONS

- Building Emergency capacities (EOCs)
- GEMP related activities (manual, PPEP, AAR,...)

RESPONSE

Support countries at risk or affected to respond to animal health emergencies



- Emergency missions
- Alert missions

INCIDENT COORDINATION

Develop leadership and expertise and support national, regional and international coordination of animal health events



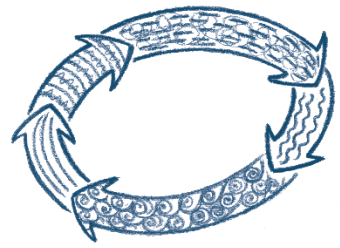
- Coordination platform for local, regional and global animal health emergencies
- Incident Coordination Groups (ICG) Ukraine

COLLABORATION AND RESOURCES MOBILIZATION

Develop strong collaborative networks and resource availability for a timely and effective management of animal health emergencies



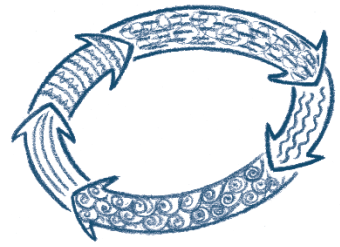
- Partnership with OIE, WHO
- INTERPOL, IAEA, WVA, FESASS, AVSF, FVI, EmVetNet (OIE), FS cluster
- Resources : TCPe, CERF, etc



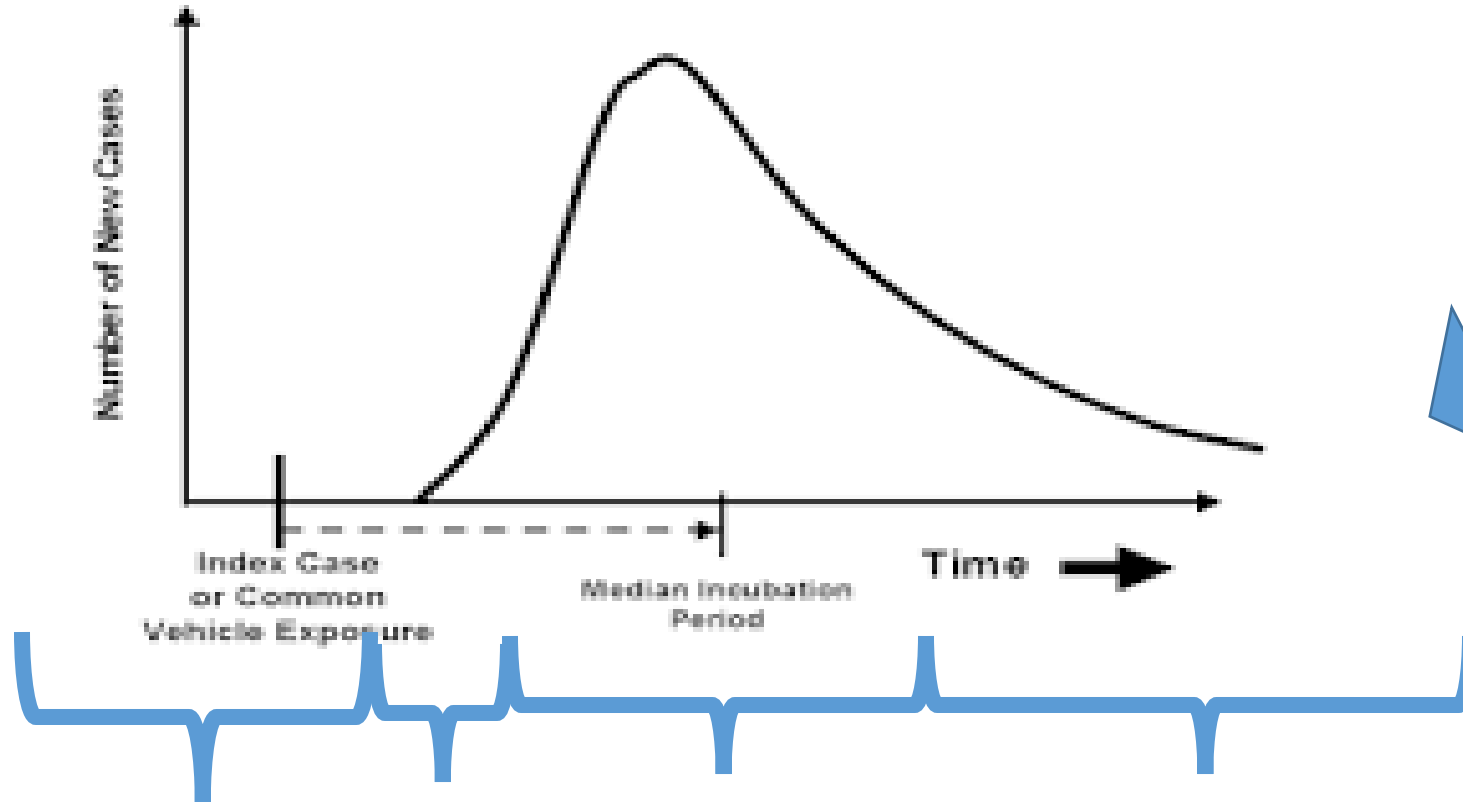
What is GEMP?

- Best management practices to **address animal disease emergencies**
- Emergency preparedness is an **ongoing process**
- The cycle of **good emergency management planning and disease control** includes preparedness, prevention, detection, response and recovery





Epidemiological Curve for an Animal Health Event



Apply actions to support emergency management throughout the epidemic curve

Peacetime	Alert	Emergency	Reconstruction
Prepare	Prepare	Prevent	Prepare
Prevent	Prevent	Detect	Prevent
Detect	Detect	Respond	Detect
	Respond	Recover	Recover

GEMP 'Tool kit' overview

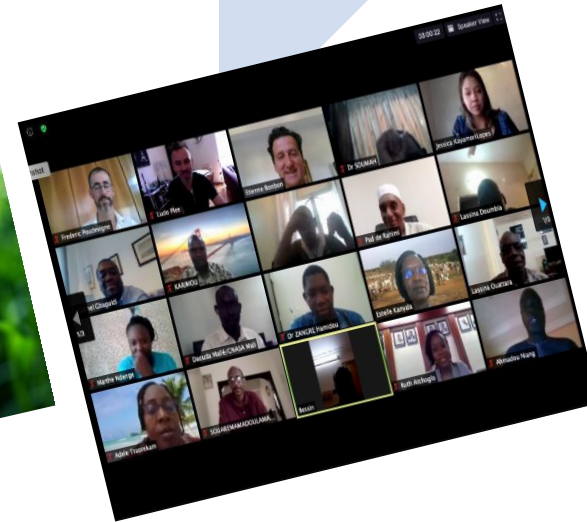
Revision of the FAO GEMP Manual: Validation, editing, translation, publication

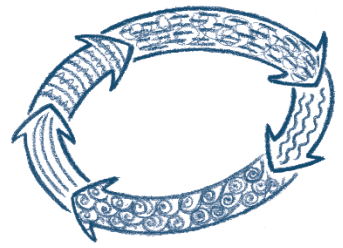
GEMP 'Advanced' Manuals and Tools: AH-EOC, AAR, GEMP-BT,...

Progressive Pathway for Emergency Preparedness

Application to Plant Health emergencies

Country training and implementation, including online



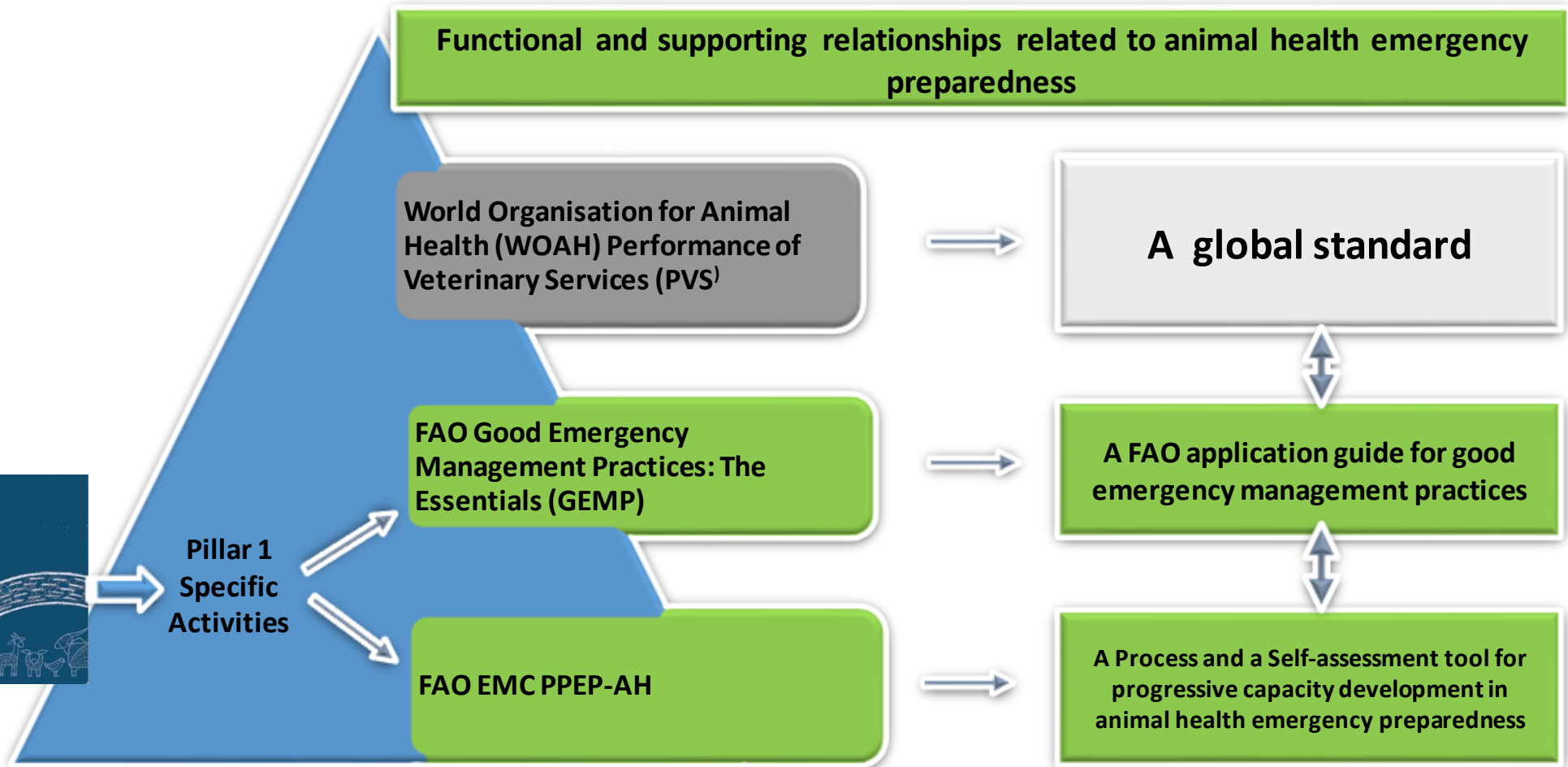
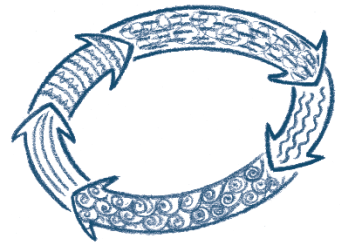


Impact of GEMP workshops

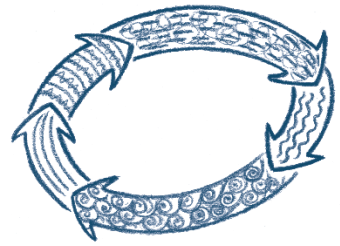
- Participants' preparedness and **capacity to manage** emergency disease outbreaks
- **Increased confidence** in the development of their contingency plans
- **Exchange of experiences** between local, regional, national and global bodies on managing Transboundary Animal Diseases (TADs)
- Sharing of expertise between **plant and animal health specialists** and in politically tense environment



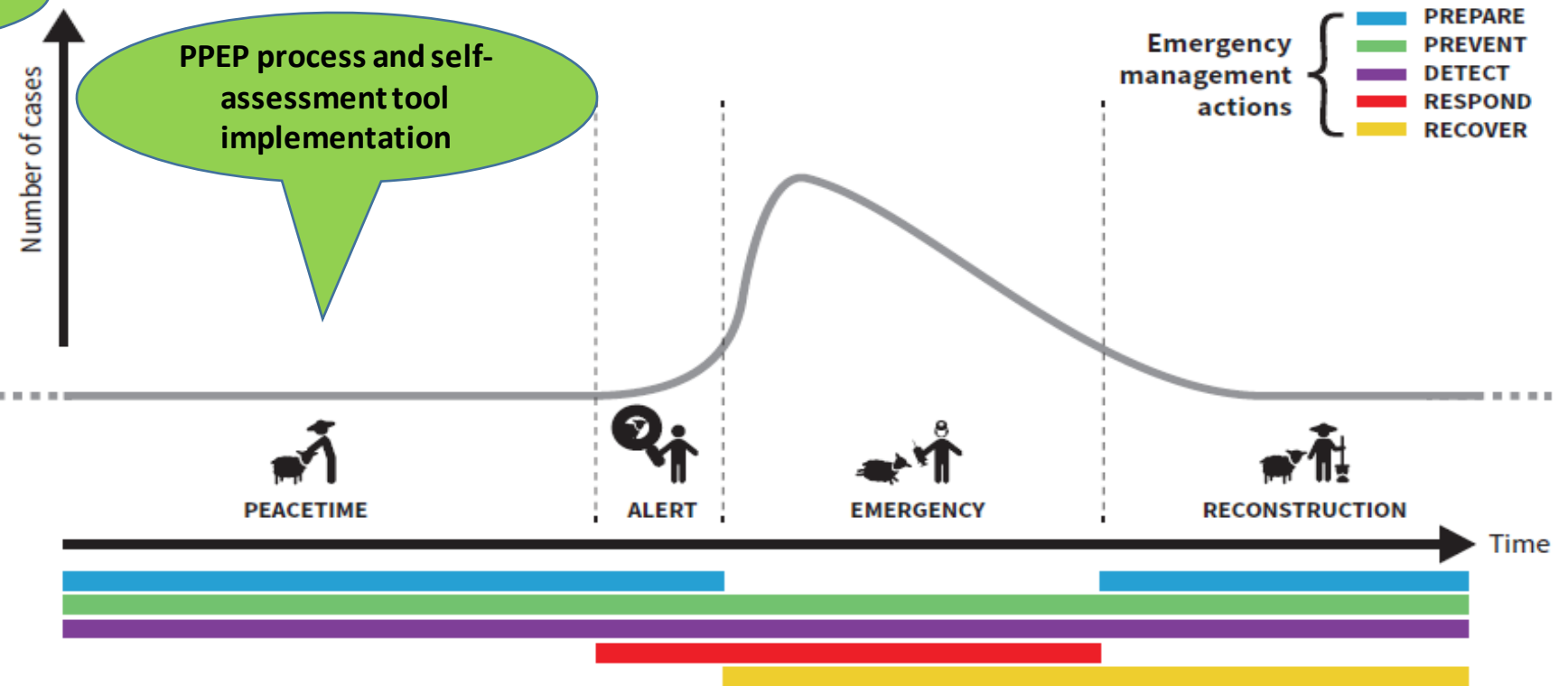
FAO EMC PPEP-AH and contextual relationships



PPEP-AH methodology: How does the PPEP-AH relate to GEMP?

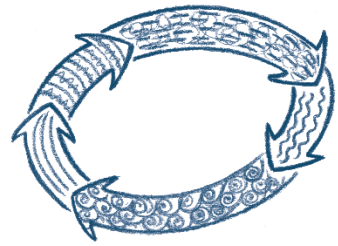


PPEP development based on(*)

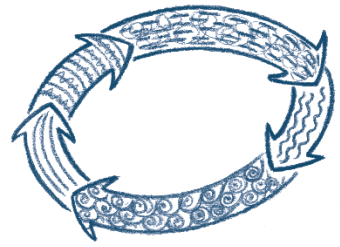


(*) Gary, F., Clauss, M., Bonbon, E. & Myers, L. 2021. Good emergency management practice: The Essentials – A guide to preparing for animal health emergencies. Third edition. FAO Animal Production and Health Manual No. 25. Rome, FAO. (<https://www.fao.org/documents/card/en/c/cb3833en/>)

PPEP-AH self-assessment tool: Key components and sub-components

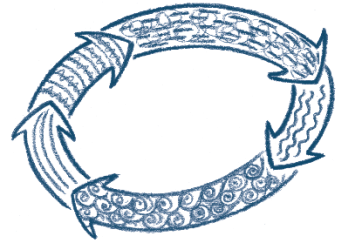


PPEP self-evaluation overall outcomes (4 key components)	PROGRESS LEVEL self-assessment		
	Sub- components general outputs (11)	Sub-components specific outputs	Sub-components specific activities (Questionnaire)
A. GENERAL PRINCIPLES On the legal and policy framework, organizational structure, management, and engagement with stakeholders	A.1 – Core political, stakeholder and legislative components	10	33
	A.2 – Prioritization and strategy		
	A.3 – Intersectoral coordination		
	A.4 – General governance and management		
B. PREPARE FOR EMERGENCIES On the state of operational preparedness and readiness to respond to animal health emergencies	B.1 – Planning	17	105
	B.2 – Equipping		
	B.3 – Training		
	B.4 – Testing		
	B.5 – Monitoring, audit and review		
C. EMERGENCY PREVENTION On implementation of measures to prevent potential introduction or spread of animal health diseases into a country	C.1 – Effective prevention of introduction or re-emerging of animal health risks	1	8
D. EMERGENCY DETECTION On the capacity to find and confirm the occurrence or presence of a pathogenic agent	D.1 – Early detection and warning	3	10
PPEP RESULTS DISPLAY	Tabular and graphic presentation		
COUNTRY SUMMARY RESULTS DISPLAY	Summary presentation – key priorities identified, and specific technical assistance required		



Assigned levels of progression of activities

Self-assessment colour & number assigned	Interpretation for PPEP self-assessment purposes
Red (1)	No current developments - means that there is no planned or scheduled activity development
Amber (2)	Development in progress - means that an activity has been planned and scheduled and is under development
Light Green (3)	Development advanced - means that a planned and scheduled activity development is relatively close to completion
Green (4)	Developed - means that a planned and scheduled activity development is completed, approved, implemented and enforced

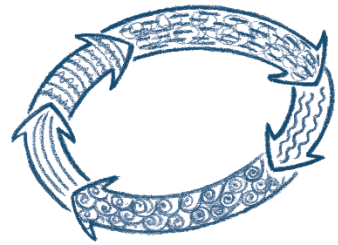


PPEP outline: Overall, General outcomes & Specific outputs

FAO Progressive Pathway for Emergency Preparedness (PPEP)																
An outcome-based process for countries to develop and improve animal health emergency preparedness and management capabilities																
A. GENERAL PRINCIPLES - Legal and Political environment - Strategy, organization and management - Collaboration and coordination with internal and external stakeholders																
This section is used to self-assess legal and policy environment including organisational structures and management and engagement with internal and external stakeholders														This section is used to facilitate a joint FAO & NVS assessment of the self-assessment results		
PPEP - Overall & General Outcomes	Specific Outputs or Activities (in alignment with GEMP Guide - Chapter 2)	National Veterinary Services (NVS) Self-Assessment										JOINT NVS & FAO EMC-AH Assessment of potential				
		Progress (level) of development of activities					Technical support required					Provide FAO EMC-AH support to:				Joint Availability support
		Not in place	In progress	Advanced progress	Functional & Enforced in practice	Last update	Technical support	Training	Exercise	Organisation/Institution		Stakeholders				
		Red (insert Number 1)	Amber (insert Number 2)	Light Green (insert Number 3)	Green (insert Number 4)	MM / YYYY	Yes(1)/No(0)	Yes(1)/No(0)	Yes(1)/No(0)	Veterinary Service HQ	Field Veterinary Services	Farmers	Industry			
								Yes(1)/No(0)	Yes(1)/No(0)	Yes(1)/No(0)	Yes(1)/No(0)					
	Membership/Participation in International/Regional Organizations or Agreements on animal health			3												
	Overall legislative framework related to animal health		2													
	A.1.1. Enabling general institutional aspects	PPEP - Overall & General Outcomes										Specific Outputs or Activities (in alignment with GEMP Guide)				
	General animal health legislative framework															
	General definition of roles and responsibilities for animal health															
	Quality Veterinary Services (possible assessment available)															
	Procedure to access to and mobilize material resources															
	Animal production and health present in country's national priorities															
	Mapping of national leaders (political and technical)															

PPEP outline:

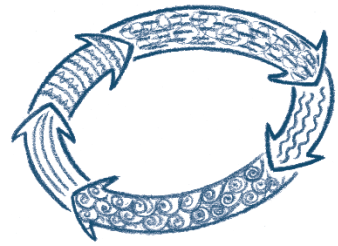
Assign levels of development per activity



FAO Progressive Pathway for Emergency Preparedness (PPEP)														
An outcome-based process for countries to develop and improve animal health emergency preparedness and management capabilities														
A. GENERAL PRINCIPLES - Legal and Political environment - Strategy, organization and management - Collaboration and coordination with internal and external stakeholders														
This section is used to self-assess legal and policy environment including organisational structures and management and engagement with internal and external stakeholders												This section is used to facilitate a joint FAO & NVS assessment of the self-assessment results		
PPEP - Overall & General Outcomes	Specific Outputs or Activities (in alignment with GEMP Guide - Chapter 2)	National Veterinary Services (NVS) Self-Assessment					Technical support required			JOINT NVS & FAO EMC-AH Assessment of potential support				
		Progress (level) of development of activities								Provide FAO EMC-AH support to:				
		Not in place	In progress	Advanced progress	Functional & Enforced in practice	Last update	Technical support	Training	Exercise	Organisation/Institution		Stakeholders		Joint Available support
		Red (insert Number 1)	Amber (insert Number 2)	Light Green (insert Number 3)	Green (insert Number 4)	MM / YYYY	Yes(1)/No(0)	Yes(1)/No(0)	Yes(1)/No(0)	Veterinary Service HQ	Field Veterinary Services	Farmers	Industry	
A.1.1. Enabling general institutional aspects		Membership/Participation in International/Regional Organizations or Agreements on animal health												
		Overall legislative framework related to animal health												
		General animal health legislative framework												
		General definition of roles and responsibilities in animal health												
		Quality Veterinary Services (possible OIE PVS assessment available)												
		Procedure to access to and mobilize human and material resources												
		Animal production and health presence/weight in country's national priorities	Red (insert Number 1)	Amber (insert Number 2)	Light Green (insert Number 3)	Green (insert Number 4)	MM/YYYY							
		Mapping of national leaders (political, central												

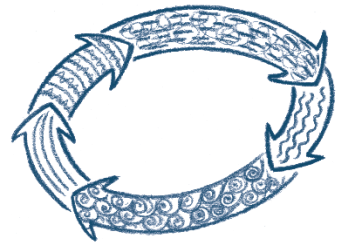
PROGRESS (LEVEL) OF DEVELOPMENT OF ACTIVITIES				
Not in place	In progress	Advanced progress	Functional & Enforced in practice	Last update
Red (insert Number 1)	Amber (insert Number 2)	Light Green (insert Number 3)	Green (insert Number 4)	MM/YYYY

PPEP outline: Joint NSV and FAO needs assessment

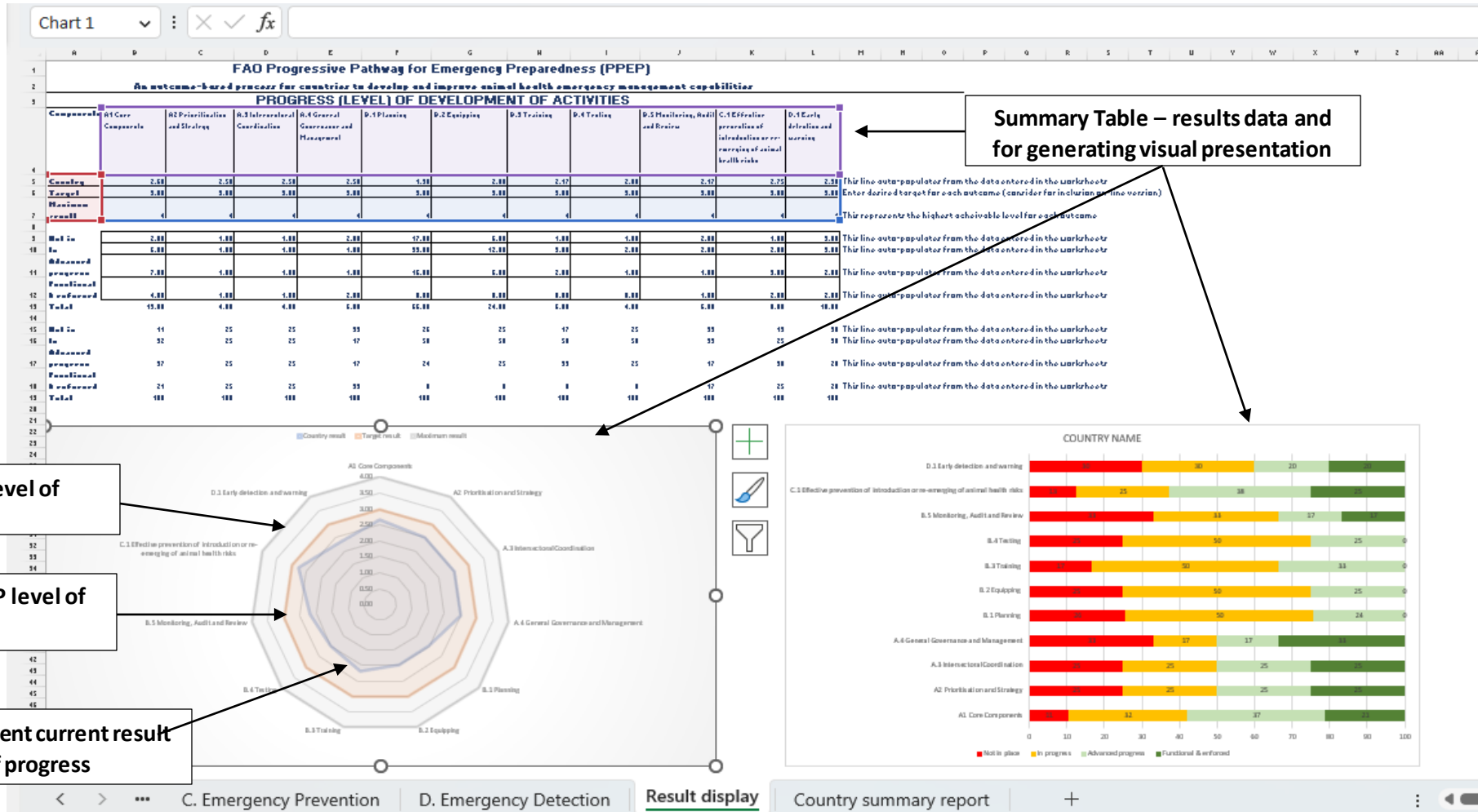


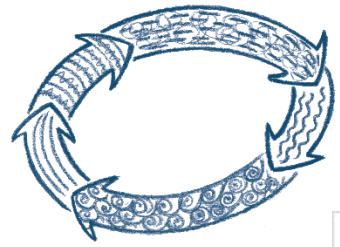
FAO EMC-AH: PPEP Prototype (WORKING DOCUMENT - DETAILED VERSION v.1 - 17042021)(Excel)														
A. GENERAL PRINCIPLES - Legal and Political environment - Strategy, organization and management - Collaboration and coordination with internal and external stakeholders														
The AIM of this section is to self-assess legal and policy environment including organisational structures and magagement and engagement with internal and external stakeholders										The Aim of this section is to facilitate a joint FAO & NVS assessment of capacity needs following the self-assessment results				
PPEP - Overall & General Outcomes	Specific Outputs or Activities (in alignment with GEMP Guide)	National Veterinary Services (NVS): Self-Assessment and Benchmarking Capacity Needs requirements					TECHNICAL SUPPORT REQUIRED			JOINT NVS & FAO EMC-AH Assessment of self-assessment results - Potential for NVS capacity needs support defined and agreed				
		PROGRESS (LEVEL) OF DEVELOPMENT OF ACTIVITIES					Last update	Technical support	Training	Exercise	Provide FAO EMC-AH support to:			
		Not in place (1)	In progress (2)	Advanced progress (3)	Functional & Enforced in practice (4)	MM / YYYY					Veterinary Service HQ	Field Veterinary Services	Farmers	Industry
		Red (insert Number 1)	Amber (insert Number 2)	Light Green (insert Number 3)	Green (insert Number 4)		Yes(1) /No(0)	Yes(1) /No(0)	Yes(1) /No(0)	Yes(1) /No(0)	Yes(1) /No(0)	Yes(1) /No(0)	Yes(1) /No(0)	
A.1.1 Enabling general institutional aspects		Membership/Participation in International/Regional Organizations or Agreements on animal health												
		Overall legislative framework related to animal health												
		General animal health legislative framework												
		General definition of roles and responsibilities in animal health												
		Quality Veterinary Services (possible OIE PVS)												
JOINT NVS & FAO EMC-AH Assessment - Potential for NVS capacity needs support														
Provide FAO AH ECM support to:														
Organisation/Institution				Stakeholders				FAO Comment (s) - Support relevant to PPEP - FAO Tools						
Veterinary Service HQ		Field Veterinary Services		Farmers		Industry								
Yes(1) /No(0)		Yes(1) /No(0)		Yes(1) /No(0)		Yes(1) /No(0)								

PPEP outline: Country summary results display

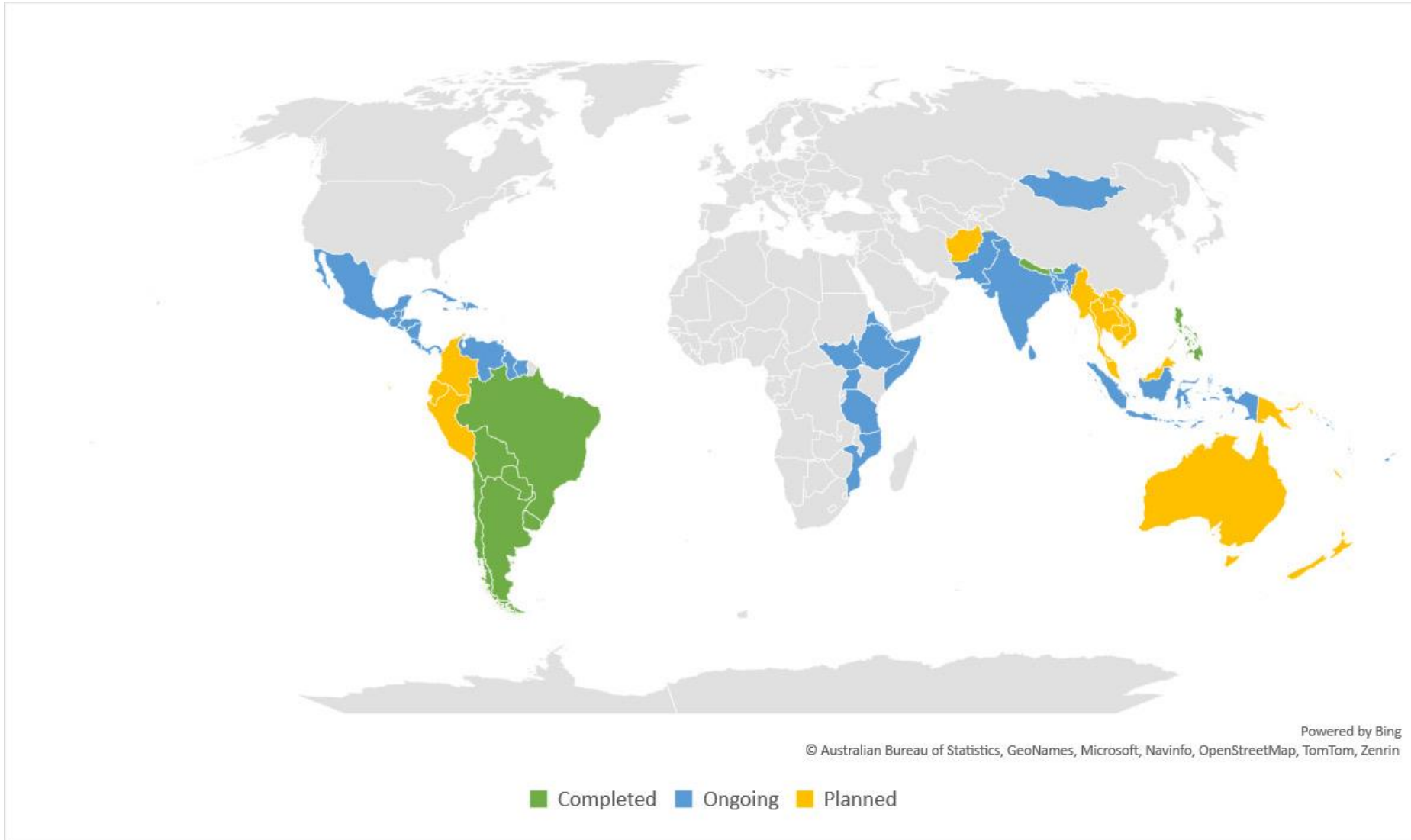


This is just an example.

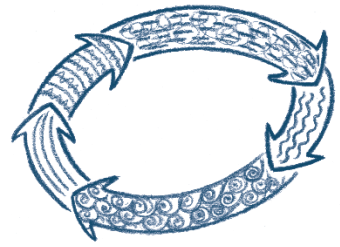




PPEP assessment... implementation as of 31 March 2023



Increasing collaboration with other FAO Sectoral Units



Operational

Prototypes in the various development phase

Prototypes to be developed...

Animal Health

Plant Health

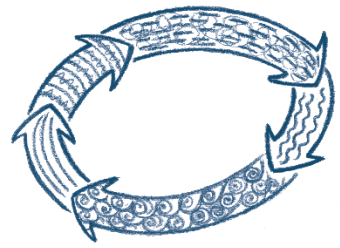
Aquatic Health

Natural Disasters

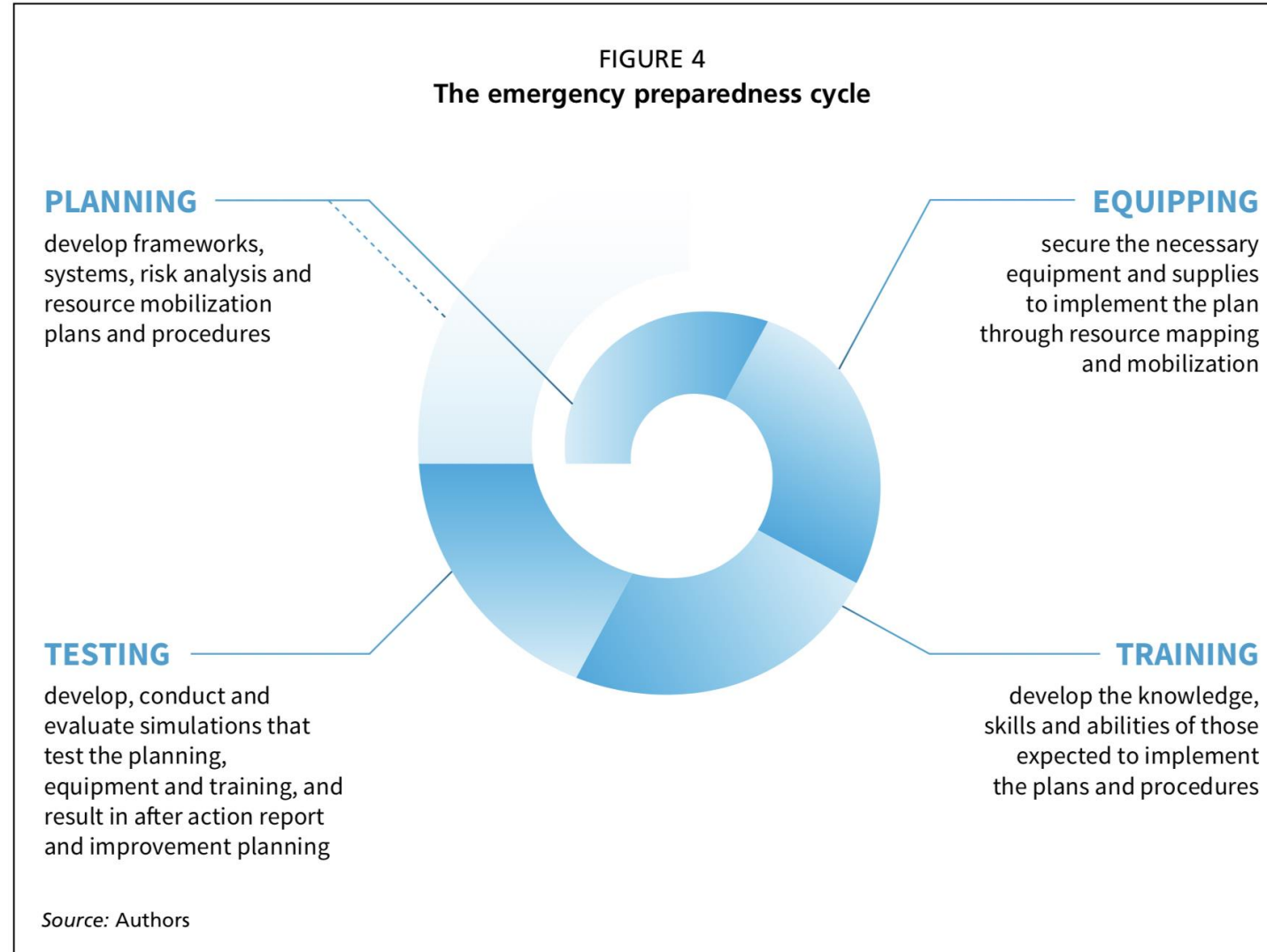
One PPEP

Forestry?





Emergency Preparedness Cycle – a never-ending story



Emergency Management Centre

For a world
prepared to
manage high impact
animal health
emergencies

www.fao.org/emergencies

Emergency Management Centre

THANK YOU!



*Email EMC-AH: emc-ah@fao.org
Email presenter: Ludovic.Plee@fao.org*